

## OPERATION & SAFETY MANUAL



### **⚠️ WARNING**

*These instructions are for your personal safety. Always ensure that you have read and understood these instructions before using the equipment.*

**SAVE THESE INSTRUCTIONS FOR FUTURE REFERENCE.**

# TABLE OF CONTENTS

SAVE ALL WARNINGS AND INSTRUCTIONS FOR FUTURE REFERENCE

TOPIC	PAGE
Safety Information	3
Chain Styles	4
Small Cleaning Chain 'Rabbit Ear'	4
Original Chains	4
Single Original Chains	4
Tiger Drill Chains	5
Express Drill Chains	5
Cyclone Chains	5
3D Chains	6
User Guide - 3D Chains	7
Configuring Original Chains	8
Chain Versions (PVC, Standard, Tiger, Premium, Tornado)	9
Special Tooling Combinations	10
Selecting the Correct Chain	11
Chain Selection by Shaft Diameter	12
Operation	13
Attaching Chains and Tightening Set Screws	15
Maintenance	16
Practical Tips & Safety Advice	17
Warranty Policy & Procedures	19
Training	20

To watch practical demonstration videos, take a course, or to download an electronic copy of these Instructions, please visit [www.picoteinstitute.com](http://www.picoteinstitute.com). Please note that videos and courses are not intended as a replacement or alternative to this operating and safety manual, but only as an additional learning tool.

# SAFETY INFORMATION

SAVE ALL WARNINGS AND INSTRUCTIONS FOR FUTURE REFERENCE

## WARNING

This section contains important safety information.  
Failure to comply could result in serious injury or death.

### Safety Symbols

Safety symbols are used throughout this manual to draw attention to potential hazards.



**Danger** risk of serious injury or death by electrocution, follow instructions.



**Danger** risk of serious injury from rotating parts, follow instructions.



**Danger** risk of serious injury from hot parts, follow instructions.



**Danger** do not touch. Risk of injury, follow instructions.

### Personal Protective Equipment (PPE)

Safety symbols are used throughout this manual to draw attention to potential hazards.



Suitable eye protection to protect against injuries and chemicals from irritating eyes.



Suitable heat resistant gloves. Do not use gloves which can become entangled.



Suitable respirator to prevent any dust or fumes being inhaled or consumed, which could cause occupational asthma or dermatitis.



Suitable ear protection to protect against hearing loss.

# CHAIN STYLES

**SAVE ALL WARNINGS AND INSTRUCTIONS FOR FUTURE REFERENCE**

**Always select the largest possible chain for the job.**

## **SMALL CLEANING CHAIN 'RABBIT EAR'**

This is the preferred tool to go inside the pipe during the cleaning of small diameter pipes with tight 90 degree bends. This chain is supplied **without** Carbide Teeth.

To use these chains you need to first remove the "Sleeve" from the outer casing of the Miller.

### **Available Diameters:**

- 8mm ( $\frac{1}{3}$ " ) Shaft: DN32-40 (1 $\frac{1}{4}$ -1 $\frac{1}{2}$ " )
- 10mm ( $\frac{3}{8}$ " ) Shaft: DN50-70 (2-3" )



## **ORIGINAL CHAIN**

Original Cleaning Chains are designed to make fast work of pipe cleaning, whether it is tree roots, scale, calcium build-up, concrete, lead, soft blockages, failed gaskets or pipe imperfections. They are a good all-round cleaning option and are often referred to as the starter chain because they are slightly adjustable; this allows you to make minor adjustments to the chain size to compensate for reduced pipe interior for initial cleaning of blocked pipes and then readjust them to their optimal diameter. It is recommended to build up leaders when Original Chains are used to enable faster tool change and prolong the service life of the flexible shaft.

### **Available Diameters:**

- 8mm ( $\frac{1}{3}$ " ) Shaft: DN50-150 (2-6" )
- 10mm ( $\frac{3}{8}$ " ) Shaft: DN70-150 (3-6" )
- 12mm ( $\frac{1}{2}$ " ) Shaft: DN70-250 (3-10" )
- 18mm ( $\frac{3}{4}$ " ) Shaft: DN100-300 (4-12" )

**Original Chains can be used with Special Drill Heads or Tiger Bores. Refer to Special Tooling Combination Section.**



## **SINGLE ORIGINAL CHAIN**

The Single Original Chains are a lighter and gentler option than standard Original Chains and have greater flexibility.

### **Available Diameters:**

- 8mm ( $\frac{1}{3}$ " ) Shaft: DN50-100 (2-4" )



# CHAIN STYLES

SAVE ALL WARNINGS AND INSTRUCTIONS FOR FUTURE REFERENCE

Always select the largest possible chain for the job.

## TIGER DRILL CHAIN

Original Tiger Chain with an integrated Front Drill Head featuring the long lasting Tiger carbides to cut through roots, partial concrete and lightly collapsed liners. The integrated Front Drill Head is also manufactured with the hardened Tiger carbides for maximum cleaning power and efficiency to tackle tough jobs.



## EXPRESS DRILL CHAIN WITH STANDARD CARBIDES

A convenient and fast tool to be used in pipes that are not too fragile to unblock, remove roots or grind open/reinstate connections before installing a connection collar.



**Not for use in use in plastic or clay pipes**

**Benefits:** The front drill head quickly cuts through the lined connection and then the chains grind back the excess material to the host pipe.



### Available Diameter:

- 10mm ( $\frac{3}{8}$ " ) Shaft: DN70 - 150 (3-6")
- 12mm ( $\frac{1}{2}$ " ) Shaft: DN100 -150 (4-6")

Replacement **Drill Heads** and **Chains** are available.

## CYCLONE CHAIN

The Cyclone Chains are a great option for finishing cleaning because they accurately hone the pipe back to near original condition. They are suitable for use in pipes that are in a bad state or even cracked. The centrifugal force is evenly distributed inside the pipe so it will not hit the sides aggressively. Easily removes hard materials, such as heavy scale, encrustation, tree roots and concrete. The Cyclone is also used to eliminate any excess material, after using either the Twister Liner Remover or Twister Concrete Remover. When cleaning pipes, the Cyclone Chain is normally used after the Original Chain.



**The Cyclone Chain should only be used to remove the final 10% of deposits on the pipe wall as the diameter of the chain is fixed and cannot be adjusted.**

### Available Diameters:

- 8mm ( $\frac{1}{3}$ " ) Shaft: DN70-150 (3-6")
- 10mm ( $\frac{3}{8}$ " ) Shaft: DN70-150 (3-6")
- 12mm ( $\frac{1}{2}$ " ) Shaft: DN70-250 (3-10")
- 18mm ( $\frac{3}{4}$ " ) Shaft: DN100-300 (4-12")

# CHAIN STYLES

## SAVE ALL WARNINGS AND INSTRUCTIONS FOR FUTURE REFERENCE

**Always select the largest possible chain for the job.**

### 3D CHAINS

The speed to size adjusting 3D Cleaning Chains help you save time and money at the work site. By controlling the speed, the 3D Chain continues to expand as it removes material until it reaches its maximum size and also allows you to work in 2 different pipe sizes without swapping chains.

They are self-adjusting depending on RPM which make them great for diameter changes where access is limited since there is no need to readjust during descaling; the 3D chain will keep expanding as it removes material until it reaches its maximum size. 3D chains come on a pre-built leader making them easier to use and decreasing shaft wear. Gone are the days of changing tools every time the pipe size changes or adjusting the chain size during descaling.

**Two models available:** The Premium version features the proven, superior performance of our larger and heavier U carbide (7-ridge) teeth, while the PVC version without carbides is the safer choice when the condition of the original host pipe material is unknown (or when working in plastic/fragile pipes) to allow you to safely remove blockages and restore flow

**Benefits:** The chain adapts the pipe shape thus saving working during cleaning enabling the user to clean effectively over size changes of host pipe.

**NOTE:** Always select rotation speed according to chain opening / rotation speed table from below when working inside fragile or otherwise brittle cast iron pipes. If the host pipe is intact, a higher rotation speed can be used.



Pipe Size	Shaft size mm (inches)
<b>DN50-75 (2-3")</b>	8, 10mm ( $\frac{1}{3}$ , $\frac{3}{8}$ " )
<b>DN70-100 (3-4")</b>	8, 10, 12 mm ( $\frac{1}{3}$ , $\frac{3}{8}$ , $\frac{1}{2}$ " )
<b>DN100-150 (4-6")</b>	10, 12 mm ( $\frac{3}{8}$ , $\frac{1}{2}$ " )



# 3D CHAIN USER GUIDE

**SAVE ALL WARNINGS AND INSTRUCTIONS FOR FUTURE REFERENCE**

**NOTE!** Always select the largest possible chain for the job. Select rotation speed according to chain opening / rotation speed table from below when working inside fragile or otherwise brittle cast iron pipes. If the host pipe is intact, a higher rotation speed can be used.

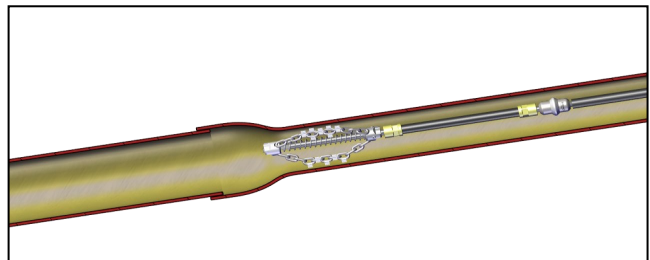
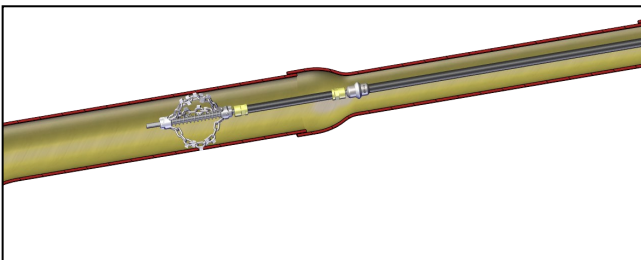
## Operational Guide: Rotation Speed / Chain Opening

Chain mm/inches	Rotation speed	Shaft size mm (Inches)
<b>DN50 to 70 (2 to 3")</b>	Lev. 2 <sup>(A)</sup> - DN50 (2") / Lev 3 <sup>(B)</sup> Lev. 4 <sup>(A)</sup> - DN70 (3") / Lev 8 <sup>(B)</sup>	8mm (1/3")
<b>DN70 to 100 (3 to 4")</b>	Lev. 2 <sup>(A)</sup> - DN70 (3") / Lev 3 <sup>(B)</sup> Lev. 3 <sup>(A)</sup> - DN100 (4") / Lev 6 <sup>(B)</sup>	8mm (1/3")
<b>DN50 to 70 (2 to 3")</b>	800 rpm - DN70 (3") 1250 rpm - DN100 (4")	10mm (3/8")
<b>DN70 to 100 (3 to 4")</b>	800 rpm - DN70 (3") 1250 rpm - DN100 (4")	10 & 12mm (3/8 & 1/2")
<b>DN100 to 150 (4 to 6")</b>	800 rpm - DN100 (4") 1100 rpm - DN150 (6")	10 & 12mm (3/8 & 1/2")

**Rotation Speeds**  
**(A)** = Standard Machines  
**(B)** = Battery Machines

### 3D Chain cleaning different pipe diameters.

The 3D Chain adapts its size, therefore the operator can easily clean the pipe with size changes or heavy scale without need to change the tool during the cleaning work. The process is presented below.



After moving to larger pipe, the cleaning chain opens up as the operator increases the speed. If the host pipe is fragile, please refer to rotation speed / chain opening guide above.

# CONFIGURING ORIGINAL CHAINS

## SAVE ALL WARNINGS AND INSTRUCTIONS FOR FUTURE REFERENCE

Always select the largest possible chain for the job.

The Original Chains should always be used on a Leader, which preserves the shaft on the Miller as you do not have to keep cutting the shaft back to use other tools.

### How to set up the Original Chains correctly:

1. Place fully stretched out Original Chain next to the leader.
2. Cut the front section of the outer casing, on the leader, just behind the rear connector and set aside.
3. Feed the Original Chain over the exposed shaft, ensuring that the chain has not twisted, then lock the front connector onto the steel shaft.
4. Take the two outer chains and slowly pull them apart until the measured distance is equal to the bore of uncleaned pipe.
5. Finally check that the chains are not twisted, then lock the rear connector in place.
6. During the cleaning operation the operator will need to adjust the size of the chain by moving the rear connector towards the front connector.

**Note:** A section of the leftover outer casing can be placed between the two connectors to prevent the steel shaft from being damaged and/or snapping.

- Always check the distance between the two outer chains.
- The distance should be no greater than the inside diameter of the pipe + 5mm (  $\frac{3}{16}$ ”).





# CHAIN VERSIONS

**SAVE ALL WARNINGS AND INSTRUCTIONS FOR FUTURE REFERENCE**

## PVC CHAINS

### **Stainless steel chain links without any carbide teeth**

These chains are safe to use in: Plastic, Copper, Pitch Fibre / Orangeburg, Clay, Concrete and Metal pipes. Great for cleaning, removing scale and tree roots.



## STANDARD CHAINS

### **Star carbide (3-ridge)**

An efficient general cleaning chain suitable for: Clay, Concrete and Cast Iron pipes. These chains are suitable for cleaning, removing scale and tree roots.



## TIGER CHAINS

Equipped with extra-hard, very long lasting Tiger carbide teeth with a lighter chain material to create a gentle but extremely durable option for cleaning cast iron pipes.



## PREMIUM CHAINS

### **Larger and heavier U carbide (7-ridge)**

Stronger and faster than any other chain on the market. A versatile tool for cast iron pipes. For tough descaling, hard deposits and removing residual concrete or failed liner, including inconsistencies, wrinkles and remains.



## TORNADO CHAINS

### **ONLY for use with the Maxi Power+.**

With strong hardened stainless steel links instead of carbides, these chains are long-lasting and ideal for descaling and removing hard deposits inside cast iron pipes.



# SPECIAL TOOLING COMBINATIONS

SAVE ALL WARNINGS AND INSTRUCTIONS FOR FUTURE REFERENCE

**Operate carefully as these combinations makes cleaning work much more strenuous on the Millers and the safety clutch may engage more frequently.**

## **Combining Special Drill Heads and Original Chains**

A Special Drill Head can be used in the front of the Original Chains to create a tool which can progress forward even in badly corroded or heavily scaled pipes. This combination is also very effective at removing roots.



## **Combining Tiger Bores & Original Premium Chains**

The Tiger Bore can be used in the front of **Original Premium Chains** to create a tool which can progress forward even in badly corroded or heavily scaled pipes. This combination is also very effective at removing concrete and hard grout from pipes.






# SELECTING THE CORRECT CHAIN

## SAVE ALL WARNINGS AND INSTRUCTIONS FOR FUTURE REFERENCE

The selection of the type of chain is dependent on the restriction of flow through the pipe. Always start of with either the Tiger Drill Chains, Express Drill Chain, Original Chains or Cleaning Chains until 90% of the flow has been restored. You then use the Cyclone Chains to remove the last 10%.

The following table below will help you to select the correct chains:

PIPE FLOW	CHAIN TYPE
<p>Pipe Fully Blocked (90% to 100%)</p> 	<ul style="list-style-type: none"><li>• Tiger Drill Chain</li><li>• Express Drill Chain</li><li>• Special Drill Head &amp; Original Chain (Combination)</li></ul>
<p>Pipe Partially Blocked (15% to 90%)</p> 	<ul style="list-style-type: none"><li>• Cleaning Chain</li><li>• Original Chain</li><li>• Tiger Original Chain</li><li>• Tiger Drill Chain</li><li>• Express Drill Chain</li><li>• 3D Chain</li></ul>
<p>Pipe Partial Blocked / Cleaned (Less than 10%)</p> 	<ul style="list-style-type: none"><li>• Cyclone Chain</li><li>• Tiger Cyclone Chain</li></ul>

### Chains can be used to:

- Unblock and Clean Pipes
- Descale and Clean Metal Pipes
- Remove Tree Roots
- Remove Lime Scale / Hard Deposits / Silicates
- Remove Fats Oil and Grease (FOG's)
- Remove Partial Concrete (Tiger Original Chains / Tiger Drill Chains / Premium Chains)
- Grind Failed Linings and Resin (Tiger Drill Chains / Premium Chains)

# CHAIN SELECTION BY PIPE DIAMETER

## SAVE ALL WARNINGS AND INSTRUCTIONS FOR FUTURE REFERENCE

Picote chains have been designed for operation with the **Picote Mini Cleaner**, **Battery Mini Cleaner**, **Mini Miller** and **Battery Mini Miller** with 8mm (5/8") shaft, or **Midi Cleaner** with 10mm (3/8") shaft, or **Super Midi** and **Maxi Miller** with 12mm (1/2") shaft and the **Maxi Power+** with 18mm (3/4") shaft.

The table below shows which type of chain is available by shaft diameter:

CHAIN TYPE	SHAFT DIAMETER				
	6mm (1/4")	8mm (1/3")	10mm (3/8")	12mm (1/2")	18mm (3/4")
Small Cleaning Chains		Y	Y		
Single Original PVC Chains		Y			
Original PVC Chains	Y	Y	Y	Y	
Original Standard Chains		Y	Y	Y	
Original Tiger Chains		Y	Y	Y	
Original Premium Chains		Y	Y	Y	Y
3D PVC Chains		Y	Y	Y	
3D Premium Chains		Y	Y	Y	
Tiger Drill Chains		Y	Y	Y	
Express Drill Chains			Y	Y	
Cyclone PVC Chains		Y	Y	Y	
Cyclone Standard Chains		Y	Y	Y	
Cyclone Tiger Chains		Y	Y	Y	
Cyclone Premium Chains		Y	Y	Y	Y
Tornado Original Chains					Y
Tornado Cyclone Chains					Y

- **Plastic, Copper, Pitch Fibre (Orangeburg) or fragile pipes should be cleaned using PVC Chains PVC Chains (chains without carbides)**
- **In very fragile pipes you should only use Cyclone PVC Chains.**
- **Where sections of the host pipe are missing, you can also use the Smart Sweeper, Smart Spider or Smart Cutter™ for cleaning.**
- **As an alternative to the Cleaning Chains you can use the Smart Spider, Smart Sweepers or Smart Cutter™ which are effective tools to remove scale, roots or heavy grease.**

# OPERATION

## SAVE ALL WARNINGS AND INSTRUCTIONS FOR FUTURE REFERENCE

### **WARNING**

This section contains important safety information.  
Failure to comply could result in serious injury or death.



#### **BEFORE USE:**

Select the Cleaning Chain according to the condition, size and material of the original host pipe. Make sure that the Original Chain opens up completely and the Sockets are aligned. Always select the PVC Chain when working inside Plastic, Copper, Pitch Fibre, Orangeburg or fragile pipes. Ventilate the working site properly. Ensure that the pipes are grounded / earthed. Use a CCTV camera to observe your work.

Ensure water is flowing in the pipe or the vacuum extraction is ready (dry cleaning). Place the Cleaning Chains completely inside the pipe before starting the machine. Cleaning chains are a highly efficient tool to clean pipes. Although it is possible to perform dry grinding if necessary, it is advised that you use water when cleaning with chains. This flushes out all of the debris while you work and prevents build-up of debris or blockages resulting from such a build-up.

#### **DURING USE:**

Move the chain constantly with a 'back and forth' movement during use. Where possible, clean the pipe starting at from the far end, in about 1m (3 ft) sections, back towards the machine. Always use a CCTV camera inside the pipe to observe your progress. Adjust the speed while working as necessary. Hold the shaft tightly. Be especially careful when working in Plastic Pipes or cleaning tight bends as the chains can quickly generate enough friction heat to melt plastic pipes. In heavily scaled pipes, it is recommended to begin the work with an Original Chain until 90% flow has been restored and then use a Cyclone Chain. You can use the Smart Cutter™ to finalise the cleaning result. **When using the chains to remove lining material, the friction heat could potentially ignite a fire if the debris are not constantly removed.**

Do not push the chain with heavy force; let the chain do the work. If excessive force or high speeds are used the chain might get stuck or break, damage the shaft or the pipe.

Use either water or vacuum to remove debris. **If water cooling is not used:** take breaks after every 30 minutes of work. The tool head gets very hot during use when not water cooled. Touch only with heat resistant gloves. Tool can be cooled down with water or let it cool in fresh air. Observe the outer casing temperature and allow the Miller to cool down at every 30 minute period of constant work.

#### **RECOMMENDATIONS**

- Move the chain constantly back and forth while cleaning.
- Be especially careful when working in plastic pipes as the friction heat can quickly melt the pipe .
- Create Leaders for Original Chains and Drill Chains to enable quick tool changes and extend the service life of the flexible shaft.

# OPERATION

## SAVE ALL WARNINGS AND INSTRUCTIONS FOR FUTURE REFERENCE

### AFTER USE

**Be careful when removing the chain from the pipe as the chain can be very hot. Always turn the power off before you remove the chain out from the pipe! There is a risk of serious injury or even death!**

Inspect the condition of the chain and shaft. Replace worn-out parts. If part of the shaft is damaged, it can be removed using a portable band saw or disc cutter/angle grinder. Finally, shorten outer casing accordingly.

The chains can be operated as long as the chain links are solid (all types of chains) and most of the carbides still attached (Standard, Tiger and Premium versions).

- Make sure that Original Chain can open completely.
- The first tool inside the pipe when cleaning should be the Original Chain or 3D Chain followed by the Cyclone Chain. To ensure the perfect finish use the Smart Cutter™ to finalise the cleaning result.
- **Do not power up the Cleaning Chain outside of the pipe!**
- The Cleaning Chain needs to fit completely inside the pipe before use.

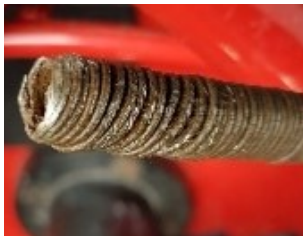


# OPERATION

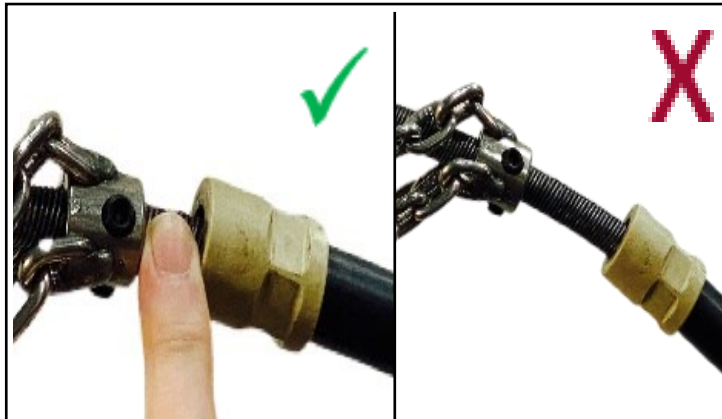
## SAVE ALL WARNINGS AND INSTRUCTIONS FOR FUTURE REFERENCE

### ATTACHING THE CHAINS

- Always inspect the flexible shaft before each use. If there are potential weak points, or the shaft is damaged, cut off the damaged length or replace the entire shaft as needed.
- Round off any sharp edges of the shaft to avoid cuts and to make it easier to insert the shaft into the tooling.
- Run the shaft for 30 seconds and then check that there is sufficient length of exposed flexible shaft, without its outer casing, to attach tooling and allow for shaft movement.



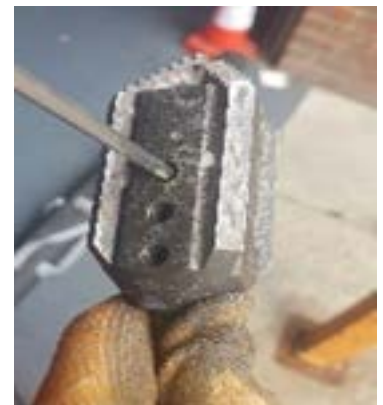
Damaged Shaft – needs to be trimmed back



Keep the gap between the Sleeve and the tool to approximately 6mm (1/4")

### TIGHTENING THE SET SCREWS

- Check that all tooling screws have been loosened so that the shaft can be easily inserted.
- Position the shaft inside the tooling as far as it will go.
- Always tighten the screws starting from the screw furthest away from the end of the flexible shaft (where applicable).



# MAINTENANCE

## SAVE ALL WARNINGS AND INSTRUCTIONS FOR FUTURE REFERENCE

### CARING FOR THE FLEXIBLE SHAFT

The Flexible Shaft is pre-treated with **Picote Flexible Shaft Lubricant (1350000020)** and the casing replaced prior to shipping. Always inspect the condition of the Flexible Shaft and apply lubricant between the Flexible Shaft and its outer casing every 2 to 3 months depending on usage. Refer to the relevant machine Operation and Safety Manual for servicing the flexible shaft and its outer casing.



### INSPECTION OF THE CHAINS

Check the condition of the chain links regularly. If chain links are worn or are cracked, the chain needs to be changed.

The Standard, Tiger and Premium Chains can still be used if most of the carbides are attached, although they may be less effective and cleaning may take longer depending on the number of carbides that are missing.



### FASTENER SCREWS

If you are unable to tighten the fastener screws properly, due to worn out hex socket heads, replace the fastener screws immediately. Always use Loctite 542 on the screw threads to prevent the screws from vibrating loose. Otherwise, the chain may become loose and fall into the pipe during use.



### **WARNING**

This section contains important safety information.  
Failure to comply could result in serious injury or death.



Here are some useful tips on how to get the most out of your Picote system. Always use the recommended tools for maintenance to avoid personal injury.

#### **CUTTING THE FLEXIBLE SHAFT**

Always inspect the Flexible Shaft before each use. Run the machine for 30 seconds, in clockwise direction, to allow the shaft to return to its resting position. If there are potential weak points, or the shaft is damaged, cut off the damaged length using a bandsaw.

For most tools, the shaft should extend ~40mm (1 ½") past the casing. Hubs and Original chains without a leader require more exposed shaft.



#### **CUTTING THE OUTER CASING**

Always inspect the outer casing before each use. The easiest and safest way to shorten the outer casing to the correct length is using a Sheath Cutter.

Only the necessary amount of bare shaft should be exposed at any time.



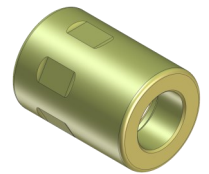
#### **SHAFT ROUNDER**

The Shaft Rounder is used to smooth the end of the Flexible Shaft, preventing the user from being cut by the otherwise sharp metal edge and making it easier to install tooling.



#### **SLEEVE**

Always use a Sleeve when working with a Miller. It prolongs the lifetime of the Flexible Shaft and prevents the outer casing from melting in the tool end. Sleeves can be reused when the outer casing has been shortened.



# PRACTICAL TIPS & SAFETY ADVICE

## SAVE ALL WARNINGS AND INSTRUCTIONS FOR FUTURE REFERENCE

Here are some useful tips on how to get the most out of your Picote system. Always use the recommended tools for maintenance to avoid personal injury.

### CREATING LEADERS

You can extend the life of the Flexible Shaft and increase productivity on site by making individual leaders for the most commonly used tools. This way you can easily and quickly switch between tools. **Leaders should always be used if possible.**



### ADDING A VISUAL MARKER FOR SAFETY

If not using a Leader, attach a visual marker (tape) on the outer casing of the Flexible Shaft. Place it around 500mm (20") from the end of the shaft.

The marker will indicate the tool location and help prevent possible injury from the rotating parts by alerting you when the tool is about to exit the pipe.



# WARRANTY POLICY & PROCEDURE

## SAVE ALL WARNINGS AND INSTRUCTIONS FOR FUTURE REFERENCE

### Limited Warranty:

Picote warrants to the original End User that the Product purchased by such End User will operate in accordance with, and substantially conform to their published specifications when shipped or otherwise delivered to the End User and for a period of one (1) year, except electric motors for which the warranty period shall be six (6) months, provided, however, that Picote does not warrant any claim or damage under this Warranty if such claim or damage results from:

1. Consumable parts or normal wear and tear resulting from use of the Products,
2. Product overload or overheated motor,
3. Regular periodic maintenance of Products,
4. Misuse, neglect, or improper installation or maintenance of the Products, or use of Products not for their intended purpose,
5. Products that have been altered, modified, repaired, opened or tampered with by anyone other than Picote or an authorized Picote Service Centre, or unsuitable or unauthorized spare parts, accessories or third party products when using the Products or;
6. the use of the Products not in compliance with their respective Documentation, user manuals, safety and maintenance instructions, and any usage restrictions contained therein, or
7. accident, fire, power failure, power surge, or other hazard.

Otherwise, the Products are sold AS IS. End User is responsible for using the Products within their specifications and instructions as contained in the Documentation.

**EXCEPT AS SPECIFIED IN THIS WARRANTY, ALL EXPRESS OR IMPLIED CONDITIONS, REPRESENTATIONS, AND WARRANTIES INCLUDING, WITHOUT LIMITATION, ANY IMPLIED WARRANTY OR CONDITION OF MERCHANTABILITY, FITNESS FOR A PARTICULAR PURPOSE, NON INFRINGEMENT, SATISFACTORY QUALITY OR ARISING FROM A COURSE OF DEALING, LAW, USAGE, OR TRADE PRACTICE, ARE HEREBY EXCLUDED TO THE EXTENT ALLOWED BY APPLICABLE LAW. TO THE EXTENT AN IMPLIED WARRANTY CANNOT BE EXCLUDED, SUCH WARRANTY IS LIMITED IN DURATION TO THE WARRANTY PERIOD. BECAUSE SOME STATES OR JURISDICTIONS DO NOT ALLOW LIMITATIONS ON HOW LONG AN IMPLIED WARRANTY LASTS, THE ABOVE LIMITATION MAY NOT APPLY. This disclaimer and exclusion shall apply even if the express warranty set forth above fails of its essential purpose.**

# TRAINING

SAVE ALL WARNINGS AND INSTRUCTIONS FOR FUTURE REFERENCE

## TRAINING CENTRES:

- Phoenix, Arizona, **USA**
- Porvoo, **Finland**
- Sandhurst, England, **UK**



Picote is highly recommended to get the most out of your investment.

Certificates are awarded for all certification trainings.

Visit our website at [www.picotegroup.com](http://www.picotegroup.com) or contact us at [training@picotesolutions.com](mailto:training@picotesolutions.com) to find out about course offerings, pricing, and scheduling.







Date: April 18, 2024

**Please Contact:**  
Your Reseller / Salesperson or Picote  
**[www.picotegroup.com](http://www.picotegroup.com)**



**International Offices**

Finland. United Kingdom. USA.

**Technical Support**

[support@picotesolutions.com](mailto:support@picotesolutions.com)

**Production & R&D**

Pienteollisuustie 24  
06450 Porvoo, Finland  
[support@picotesolutions.com](mailto:support@picotesolutions.com)

**E-Learning**

Free E-learning course is available at:  
**[www.picoteinstitute.com](http://www.picoteinstitute.com)**

**Claims**

[claims@picotesolutions.com](mailto:claims@picotesolutions.com)

**Authorised Resellers:**

**[www.picotegroup.com/resellers](http://www.picotegroup.com/resellers)**